

Kitchen Designs That Deliver Big on Form and Function

Kitchens are the hub of every home, but these designs up the ante in features and practical function

By Larry W. Garnett, FAIBD, House Review Lead Designer | September 24, 2019



Designed for Legacy DCS by DTJ Design, this kitchen features an island, walk-in pantry, and wine room. See below for more details.

Builders and designers know how important kitchens are to their clients. They are where most of us really live, and so must be carefully designed to function on many fronts, from storage to food preparation to providing a gathering place. Meanwhile, separate “back kitchens” and wine storage areas are high on the lists of homebuyers serious about entertaining. Large walk-in pantries are often spacious enough to provide a place for small appliance storage and use. And while traditional cabinetry with raised-panel doors and crown molding are still popular, sleek, minimalistic materials and finishes are showing up in both contemporary and traditionally styled homes. Take a look at these kitchens created by our design team, including some stunning outdoor areas, and feel free to reach out with any questions or comments.

OLGIATA AT ROLLING HILLS C.C.

ARCHITECT: Robert Hidey Architects, ahidey@roberthidey.com, 949.655.1550

PLAN SIZE: Kitchen: Width: 21 feet, 6 inches; Depth: 17 feet, 10 inches

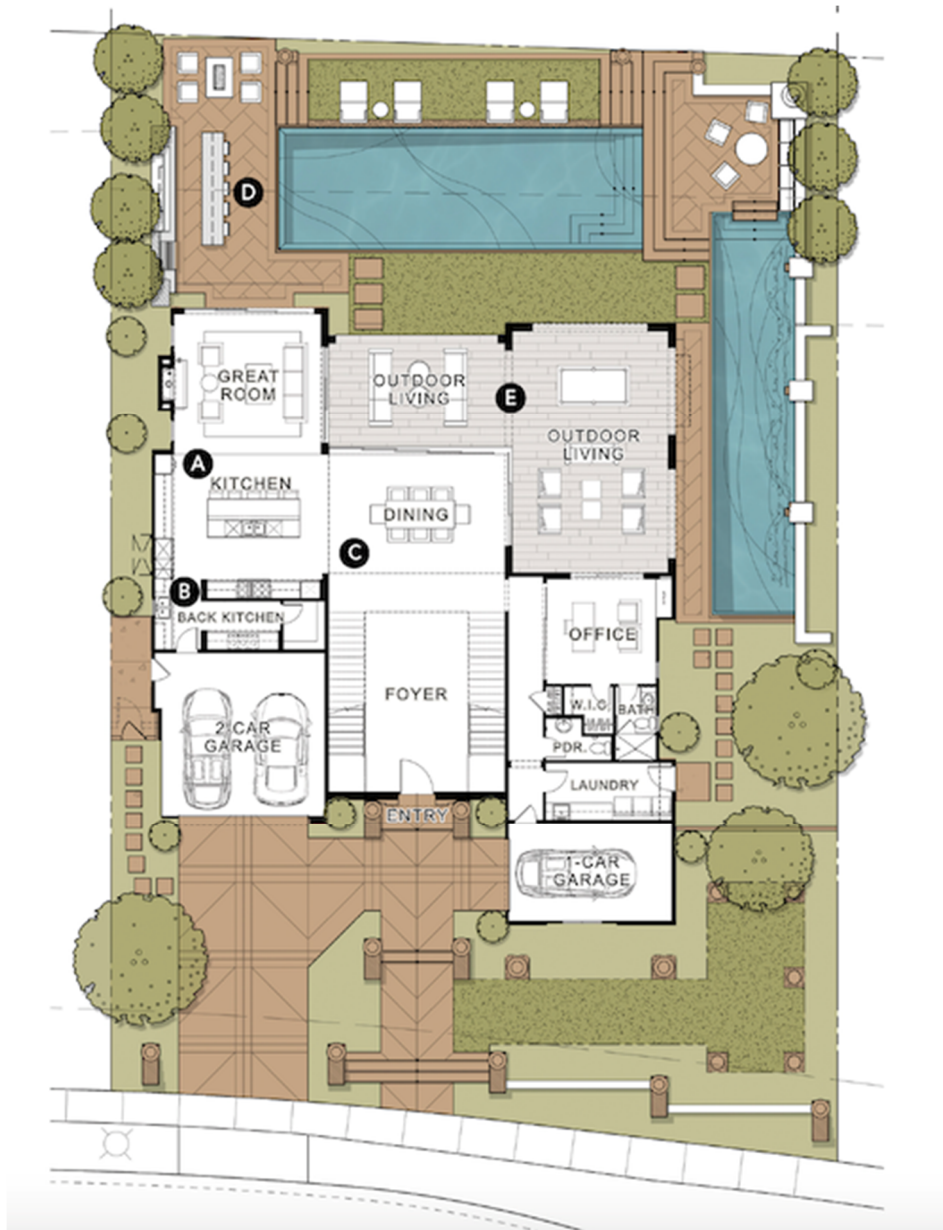
AREA: 383 sf

BACK KITCHEN (INCLUDING PANTRY): Width: 21 feet, 1 inch, Depth: 6 feet; Area: 132 sf

For Toll Brothers' Rolling Hills Country Club, the Olgiata model is designed in a European ranch style to suit an affluent family that entertains frequently. It celebrates the indoor-outdoor experience from the grand foyer, with views of the city in the distance and opportunities to enjoy the outdoors.

The kitchen, between the great room and the dining room, is the home's focal point and hub, with unimpeded access to the outdoor living areas through expansive sliding glass doors.





- A** High ceilings throughout the public spaces lend a grand aspect to the kitchen, whose 10-foot-high cabinetry provides ample storage for seasonal-use items
- B** Designed to accommodate messy prep and cleanup work, the back kitchen, which includes a walk-in pantry with copious additional storage, can be customized with additional cooktops and a second sink
- C** At the nexus of the kitchen and foyer, the formal dining room beckons, with views of the Los Angeles skyline
- D** While waiting for dinner to be served from the outdoor grill, guests seated at the outdoor bar can watch a game or the latest series on the television
- E** The L-shaped outdoor living area is the perfect spot to take in the views, enjoy before- and after-dinner drinks, or shoot a game of pool